



INSTALLATION INSTRUCTIONS FOR PART 99-3010S

INSTALLATION INSTRUCTIONS FOR PART 99-3010S

APPLICATIONS CHEVY CAMARO 2010

99-3010S

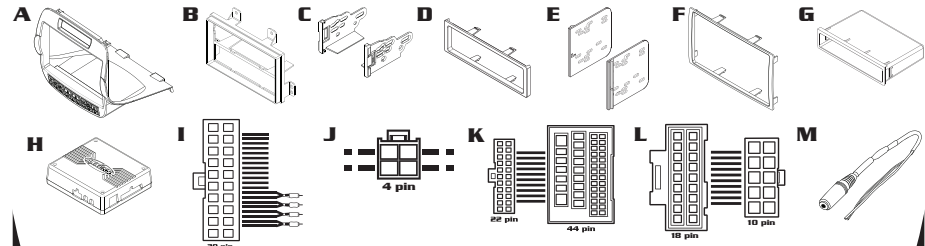
KIT FEATURES

- DIN Head Unit Provision w/ Pocket
- ISO DIN Head Unit Provision w/ Pocket
- DDIN Head Unit Provision
- ISO Stacked Head Unit Provision
- Painted Silver to Match Factory Dash



KIT COMPONENTS

- A) Radio Trim Panel •B) Radio Housing •C) ISO Brackets •D) ISO Trim Plate •E) DDIN Brackets
- F) DDIN Trim Plate •G) Pocket •H) Interface •I) 20 Pin GM Harness •J) 4 Pin Harness w/ Stripped Leads
- K) 22 Pin to 44 Pin Camaro Harness •L) 18 Pin to 10 Pin HVAC Harness
- M) Female 3.5mm Connector w/ Brown and Brown/White Wires



WIRING AND ANTENNA CONNECTIONS (sold separately)

- 40-EU10 European Antenna Adapter 2006-UP

TOOLS REQUIRED

- Phillips Screwdriver • Panel Removal Tool • Small Flat Blade Screwdriver
- Socket Wrench • Tape • Crimping Tool • Connectors (i.e. Butt Connectors)



METRA. THE WORLD'S BEST KITS.™



1-800-221-0932



metraonline.com

© COPYRIGHT 2004-2010 METRA ELECTRONICS CORPORATION

METRA. THE WORLD'S BEST KITS.™



1-800-221-0932



metraonline.com

© COPYRIGHT 2004-2010 METRA ELECTRONICS CORPORATION

REV. 3/18/2010



TABLE OF CONTENTS

NOTES

• **CHEVY CAMARO 2010** **1-2**

• **CHEVY CAMARO 2010** **3**

• **DIN HEAD UNIT PROVISION 4**

- **ISO DIN HEAD UNIT PROVISION 5**
- **DDIN/STACKED ISO DIN HEAD UNIT PROVISION 6**

• **CHEVY CAMARO 2010** **7-18**



INSTALLER
INSTITUTE

Enhance your installation and fabrication skills by enrolling in the most recognized and respected mobile electronics school in our industry. Log onto www.installerinstitute.com or call 800-354-6782 for more information and take steps toward a better tomorrow.



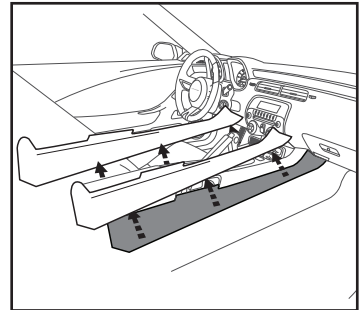
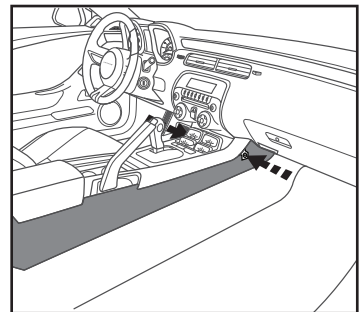
Metra recommends MECP certified technicians

This image shows a single sheet of white paper with horizontal blue ruling lines. The lines are evenly spaced and run across the width of the page. There are approximately 20 lines visible. The paper has a slight shadow on the right side, suggesting it's resting on a surface.

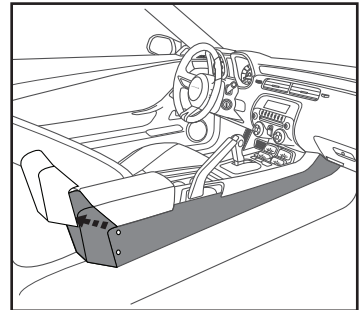
NOTES

CHEVY CAMARO 2010

- # A

**B**

C

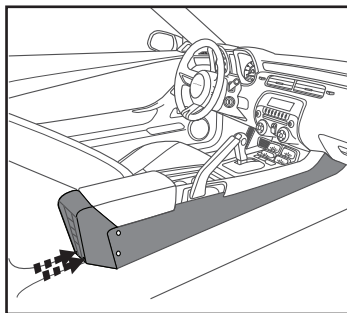


Continued on Pg. 2

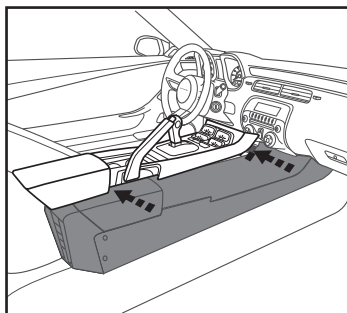
CHEVY CAMARO 2010

NOTES

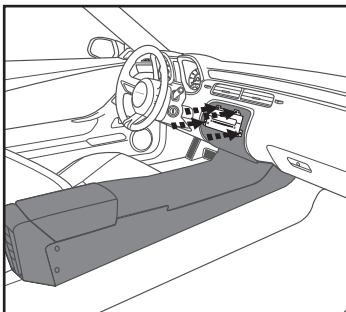
- D



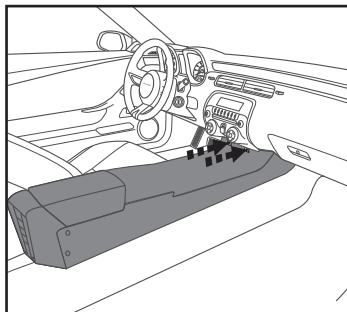
- ## E



- ## G



- F**



This image shows a single sheet of white paper with horizontal blue ruling lines. The lines are evenly spaced and run across the width of the page. There are approximately 20 lines visible. The paper has a slight shadow on its right side, suggesting it is resting on a surface.

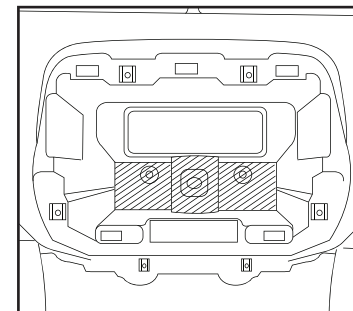
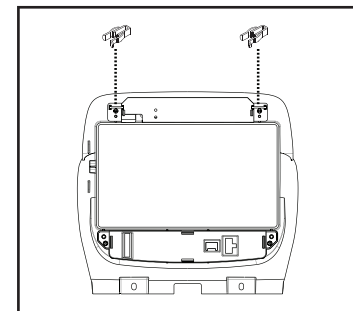
4. If you do not wish to change the LANGUAGE you can scroll up and down through the different settings with the UP and DOWN buttons.
5. Remember to press ENTER to change the desired setting.

CHANGING THE DISPLAY BACK LIGHT COLOR

1. Press the Front Defrost button for 5 seconds, the unit will go into "Configure Backlight Color" mode. The display backlight will blink while in this mode.
2. Press and hold the Face button to increase Red.
3. Press and hold the Foot button to decrease Red.
4. Press and hold the Foot/Face button to increase Green.
5. Press and hold the Foot/Def button to decrease Green.
6. Press and hold the Fan Up button to increase Blue.
7. Press and hold the Fan Down button to decrease Blue.
8. After you choose your color stop pressing the buttons and the blinking will stop and the color chosen will stay.

CHEVY CAMARO 2010

- 1** Cut and remove the sub dash radio support to make room for the interface and harnesses. (Fig. A)
- 2** Remove panel clips from factory radio and attach to the top of the kit housing. (Fig. B)

A

B


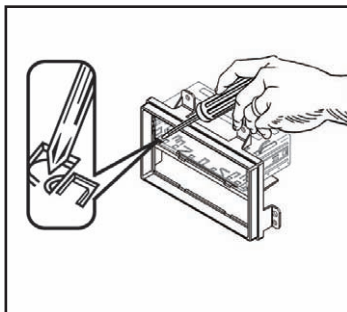
99-3010S KIT ASSEMBLY

99-3010S

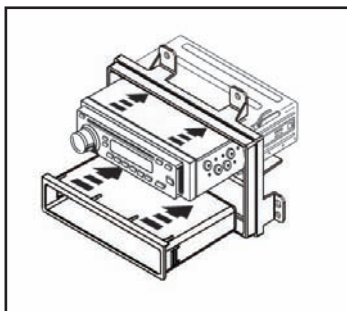
CHEVY CAMARO 2010 DIN HEAD UNIT PROVISION

- 1** Refer to the interface wiring and installing section of this manual.
- 2** Slide the DIN cage into the Radio Housing and secure by bending the metal locking tabs down. (Fig. A)
- 3** Snap the Pocket into the bottom opening of the radio housing. (Fig. B)
- 4** Slide the aftermarket head unit into the cage and secure. (Fig. B)
- 5** Reassemble dash in reverse order of disassembly using the 99-3010S radio trim panel instead of the factory panel.
- 6** PROGRAMMING: You must cycle the a/c fan speed all the way to high and back to low when you first install the kit.

A



B



VEHICLE CUSTOMIZATION WITH OPTIONAL LCD

The OEM radio is used to customize certain features of the vehicle such as:

SET_LANGUAGE

English, French, or Spanish

LOCATOR_LIGHTS

On or Off

EXIT_LIGHTING

Off, 30 seconds, or 1 minute

UNLOCKED_DOOR_AUTO_LOCKOUT

On or Off

AUTO_DOOR_UNLOCK

Off, Driver Only, or All Doors

DELAYED_LOCK

On or Off

REMOTE_UNLOCK_LIGHT_FEEDBACK

On or Off

REMOTE_LOCK_FEEDBACK

Off, Lights, Horn, or Lights & Horn

REMOTE_DOOR_UNLOCK

Driver Only or All Doors

Use the optional lcd to adjust these features accordingly:

1. Press the ESC button and PRESS ENTER TO SET LANGUAGE will appear on the screen.
2. To change the LANGUAGE press the ENTER button then press then press the UP and DOWN buttons to change the LANGUAGE.
3. Once you have chosen you LANGUAGE then press ESC to go back to be able to scroll through the other settings.

11. Play/Enter
12. PTT (Push To Talk)
13. On Hook
14. Off Hook
15. Fan Up
16. Fan Down
17. Temp Up
18. Temp Down

Note: Remember not all radios will have all these commands. Please refer to the radios' owners manual for specific commands recognized by the radio.

For instance the next command to be mapped is the Volume Down command. Let's say you want the Mode button on your steering wheel to be the Volume Down command. Hold down the Mode button till the led lights up solid red, and then release it. Now your Mode button on the steering wheel is Volume Down.

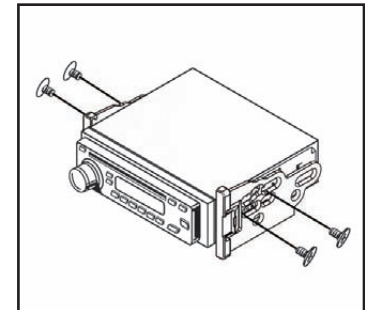
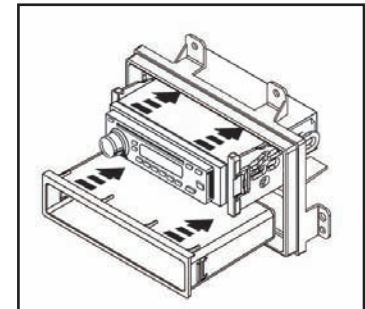
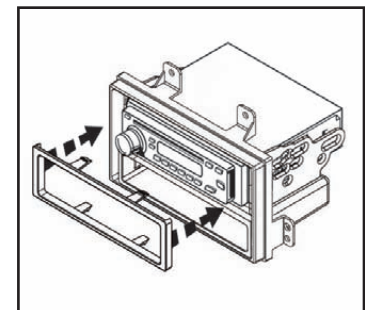
- 6) After the last button is programmed on your steering wheel (you do not have to go through the whole list), hold down the Volume Up button for at least 10 seconds then the led will go out or after the 18th button is programmed or skipped the led will go out and the remapping is completed.

If for any reason after remapping the steering wheel controls you want to return to the original steering wheel control settings, follow these steps:

- 1) Within the first 20 seconds of turning the ignition on. Press and hold down the original Volume Down button (not the Volume Down button you just remapped) for at least 25 seconds.
- 2) The led will turn on then release the Volume Down button and the led will turn off.
- 3) The original steering wheel control settings will be restored.

CHEVY CAMARO 2010 ISO DIN HEAD UNIT PROVISION

- 1** Refer to the interface wiring and installing section of this manual.
- 2** Mount the ISO Brackets to the head unit with the screws supplied with the unit. (Fig. A)
- 3** Snap the Pocket into the bottom opening of the radio housing. (Fig. B)
- 4** Slide the head unit into the radio opening until the side clips engage. (Fig. B)
- 5** Snap the Trim plate into the Radio Housing. (Fig. C)
- 6** Reassemble dash in reverse order of disassembly using the 99-3010S radio trim panel instead of the factory panel.
- 7** **PROGRAMMING:** You must cycle the a/c fan speed all the way to high and back to low when you first install the kit.

A

B

C


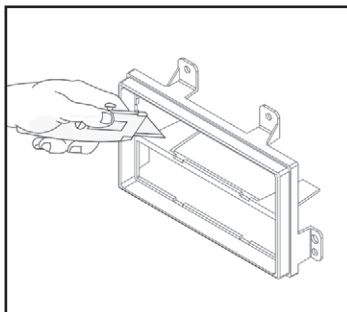
99-3010S KIT ASSEMBLY

99-3010S

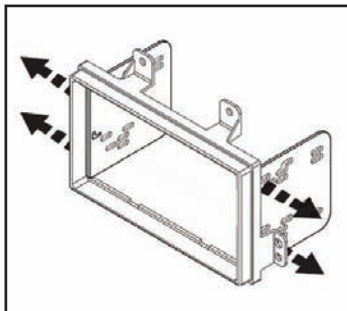
CHEVY CAMARO 2010 DDIN / STACKED ISO DIN HEAD UNIT PROVISION

- 1** Refer to the interface wiring and installing section of this manual.
- 2** Cut and remove the center support (For DDIN only). (Fig. A)
- 3** Snap the Double DIN brackets to the inside edge of the Double DIN radio housing. (Fig. B)
- 4** Slide the Double DIN head unit or stacked ISO head units into the bracket/radio housing assembly and secure the Double DIN head unit or stacked ISO head units to the assembly using the screws supplied with the radio. (Fig. C)
- 5** Snap the double DIN trim plate into the DDIN radio housing. (Fig. C)
- 6** Reassemble dash in reverse order of disassembly using the 99-3010S radio trim panel instead of the factory panel.
- 7** **PROGRAMMING:** You must cycle the a/c fan speed all the way to high and back to low when you first install the kit.

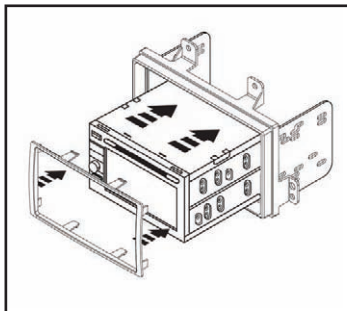
A



B



C



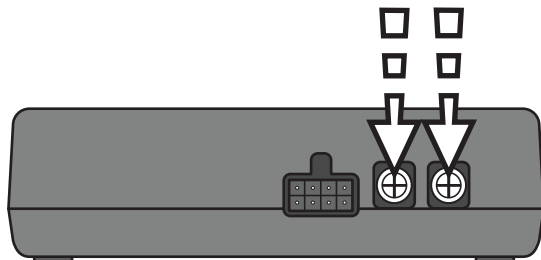
- You can only start the remapping of the steering wheel controls process within the first 20 seconds of turning the ignition key on. If you wait longer than the 20 seconds you will have to turn the ignition off then back on again.
- Within the first 20 seconds if any button other than Volume Up or Volume Down is pushed, the remapping process will stop.
- If during the remapping process no button is pushed for 30 seconds the remapping process is aborted and the original settings are reset.

SO LET'S BEGIN THE REMAPPING PROCESS:

- 1) Ideally having the interface visible is recommended since you can see the led flashes to confirm button recognition.
- 2) Turning off the radio is recommended
- 3) Within the first 20 seconds of turning the ignition on, press and hold down the Volume Up button for at least 25 seconds.
- 4) The led will light up solid red. Release Volume Up and the led will go out. Volume Up has now been programmed.
- 5) Follow the list below in order however pushing the steering wheel control button you want for the function below. If you want to skip a command press the Volume Up on the steering wheel, this will tell the interface to skip the command and go to the next one.

1. Volume Up
2. Volume Down
3. Seek Up/Next
4. Seek Down/Prev
5. Source/Mode
6. Mute
7. Preset Up
8. Preset Down
9. Power
10. Band

POTENTIOMETERS



ONSTAR LEVEL ADJUSTMENT

To adjust the Onstar volume level find the Black/Yellow wire on the 20 pin harness. Push the blue Onstar button, while the voice is speaking tap the Black/Yellow wire to ground. There are 4 volume settings for Onstar; once the 4th setting is reached and the Black/Yellow wire is tapped to ground it will automatically go back to the first volume setting. Once the volume is set it will stay at that volume until the Black/Yellow wire is tapped to ground again.

This can be set during installation and then left alone.

If user adjustment is desired, a momentary contact switch (sold separately) can be added. Connect one terminal from the switch to ground and the other terminal to the Black/Yellow wire. The volume will change one level every time the switch is pressed.

REMAPPING THE SWC BUTTONS

Let's say you have the SWC programmed to your vehicle and your radio and you want to change the button assignment for the steering wheel controls. For instance you would like Seek Up to be Mute.

First a few notes:

- The SWC must have detected the vehicle and radio it is attached to before you can remap any buttons.

CHEVY CAMARO 2010 INTERFACE WIRING

***Important: Before beginning any of the following, disconnect the negative battery terminal to prevent an accidental short circuit.**

The interface is a solution to add an aftermarket radio into GM vehicles. Whether the vehicle is amplified or non-amplified, Onstar, Bluetooth, or steering wheel controls, the interface can retain it. All the warning chimes are retained that are normally lost when the OEM radio is removed. The interface also provides a 12 volt 10 amp accessory output and navigation outputs to help install a navigation radio which include VSS, Parking Brake, and Reverse.

Interface Components

Interface

4 pin harness with stripped leads

20 pin GM Harness

22 pin to 44 pin Camaro Harness

18 pin to 10 pin HVAC Harness

Female 3.5mm connector with Brown and Brown/White wires

Tools Required For Installation

Cutting Tool

Tape

Crimping Tool

Connectors (I.E. butt-connectors, bell, caps, etc...)



Installing The Interface

*Important: Before beginning any of the following, disconnect the negative battery terminal to prevent an accidental short circuit.

1. FROM THE 20 PIN HARNESS:

Connect the Red wire to the ignition/accessory wire of the aftermarket radio.

NOTE: If the radio shuts off when OnStar is activated even though the Mute wire is connected, you may need to add a resistor between the switched 12V wire and the mute line. We suggest 100K ohms. If the radio still shuts off, you may want to reduce the resistor value. If the radio mutes at inappropriate times (such as when the lights are switched on or off), the resistor value may need to be increased.

Connect the Orange/White wire to the illumination wire of the aftermarket radio. If the aftermarket radio has no illumination wire just tape off the Orange/White wire.

Connect the Blue/White wire to the amp turn on wire of the aftermarket radio.

Connect the Brown wire to the mute wire of the aftermarket radio. If the aftermarket radio does not have a Mute wire, tape up the Brown wire.

NOTE: If the radio shuts off when OnStar is activated even though the Mute wire is connected, you may need to add a resistor between the switched 12V wire and the mute line. We suggest 100K ohms. If the radio still shuts off, you may want to reduce the resistor value. If the radio mutes at inappropriate times (such as when the lights are switched on or off), the resistor value may need to be increased.

The Black/Yellow wire will be discussed later on in the instructions.

type it has detected. (See Radio chart above)

Note: Not every aftermarket radio will have all of the possible swc commands on the steering wheel. Aftermarket radios that do not have Bluetooth features will not recognize the PTT (Push to Talk) or On Hook / Off Hook commands. Please refer to the radios owners' manual or wireless remote for specific commands the radio will recognize.

TESTING THE INTERFACE

Turn the ignition on, and then turn the aftermarket radio on.

Push the Onstar button, the radio should turn off (radio will mute if mute wire is connected) and you should hear Onstar.

Push the Onstar cancel button and the radio should come back on.

CHIME/TURN SIGNAL VOLUME ADJUSTMENT

To adjust the chime volume, use a small screwdriver to rotate the potentiometer, located on the 8 pin harness side of the interface (closest to 8 pin harness).

Turn clockwise to make the chime/turn signal louder and counterclockwise to make the chime/turn signal softer.

NOTE: Turn signal will not be affected in non amplified systems.

OVERALL GAIN LEVEL ADJUSTMENT

To adjust the overall audio volume of your vehicle, use a small screwdriver to rotate the potentiometer, located on the 8 pin harness side (furthest away from 8 pin harness). Turn clockwise to make gain louder and counterclockwise to make the gain softer.

(See figure on pg. 14)



2) LED will begin to FAST blink

3) Press the VOLUME UP button the number associated with the desired radio type (as seen in the radio list below). The LED will remain ON while holding down the button & will go back to blinking when released. For example: If the radio is a JVC, press the VOLUME UP button 5 times.

RADIO_ECLIPSE	1
RADIO_KENWOOD	2
RADIO_CLARION	3
RADIO_SONY_DUAL	4
RADIO_JVC	5
RADIO_JENSEN_PIONEER	6
RADIO_ALPINE	7
RADIO_VISTEON	8
RADIO_VALOR	9
RADIO_CLARION_5K	10

4) Press the VOLUME DOWN button to finish. The LED will then go off.

5) After a few seconds, the LED will then blink the number of times corresponding to the radio ID type. This number should be the same number the user has just pressed the VOLUME UP button.

TO FORCE THE UNIT TO RETRY TO AUTO-DETECT THE RADIO:

This action must begin 20 seconds AFTER the key is set to ACC ON position OR a steering wheel button is pressed that is NOT Volume Up nor Volume Down.

1) Hold Down VOLUME UP button for 30 seconds.

2) LED will go ON to indicate auto-detecting. (button can be released now)

3) After about 6 seconds, LED will go OFF indicating completion.

4) The LED will then blink the number of times corresponding to the radio ID

FOR NON-AMPLIFIED SYSTEMS

Connect the White wire to the left front positive speaker output of the aftermarket radio.

Connect the White/Black wire to the left front negative speaker output of the aftermarket radio.

Connect the Gray wire to the right front positive speaker output of the aftermarket radio.

Connect the Gray/Black wire to the right front negative speaker output of the aftermarket radio.

FOR AMPLIFIED SYSTEMS

Connect the White rca to the left front low level output of the aftermarket radio.

Connect the Gray rca to the right front low level output of the aftermarket radio.

Connect the Green rca to the left rear low level output of the aftermarket radio.

Connect the Violet rca to the right rear low level output of the aftermarket radio.

The following wires are for the aftermarket radios with navigation:

Connect the Green wire to the parking brake wire of the aftermarket navigation radio.

Connect the Blue/Pink wire to the VSS or speed sense wire of the aftermarket navigation radio.

Connect the Green/Purple wire to the reverse wire of the aftermarket navigation radio.



2. FROM THE 22 WAY HARNESS:

Connect the Black wire with the ring terminal to the back of the aftermarket radio chassis.

Connect the 3.5mm jack to your aftermarket radios steering wheel control input (if equipped).

NOTE: If using an Eclipse or Kenwood radio, use supplied female a 3.5 adaptor.

* For Kenwood radios: Connect the Kenwood SWC wire (normally Blue/Yellow) to the Brown wire of the ASWC. Isolate and tape the Brown/White wire, it will not be used.

* For Eclipse radios: Connect the Eclipse SWC wires (Normally Brown and Brown/Black) to the Brown and Brown/White wires of the ASWC. Brown connected to Brown and Brown/White connected to Brown/Black.

3. FROM THE 44 WAY HARNESS:

Connect the Black wire to the ground wire of the aftermarket radio.

Connect the RCA's to the AUX in on the aftermarket radio (if equipped)

NOTE: This will allow you to retain the 3.5 AUX JACK in the console.

Connect the Yellow wire to the 12-volt constant wire of the aftermarket radio. The interface comes set up for amplified systems. If the vehicle is not amplified disconnect the 4 pin harness located between the 44 way and 22 way connector.

Connect the supplied 4 pin speaker harness and connect the following:

Connect the Violet wire to the right rear positive wire of the aftermarket radio.

Connect the Violet/Black wire to the right rear negative wire of the aftermarket radio.

Connect the Green wire to the left rear positive wire of the aftermarket radio.

Connect the Green/Black wire to the left rear negative wire of the aftermarket radio.

Connect the Pink wire to the other Pink wire located on the 18 pin-to-10 pin HVAC harness.

INSTALLING THE INTERFACE

1. With all the connections completed, plug the 20 and 22 pin harnesses into the interface.
2. Reconnect the negative battery terminal.
3. Plug the 44 pin GM harness into the vehicle side harness, and plug the aftermarket radio harness into the aftermarket radio.
4. Cycle the key by turning the ignition on then off, then back on again to test the radio.

PROGRAMMING THE STEERING WHEEL CONTROLS

1. Turn on the ignition.
2. The SWC status LED on the interface will begin to blink rapidly.
3. Tap volume up steering wheel control until the LED stops blinking rapidly.
4. The LED will go off when it detects the car.
5. It will then will blink the LED the number corresponding to the radio type. (See Radio Types below). Then the LED will remain off.

TO MANUALLY SET THE RADIO TYPE:

This action must begin 20 seconds AFTER the Key is set to ACC ON position OR a steering wheel button is pressed that is NOT Volume Up nor Volume Down.

- 1) Hold Down VOLUME DOWN button for 30 seconds