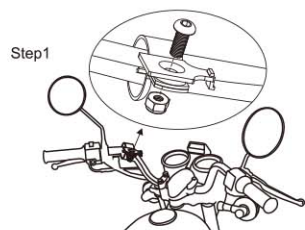
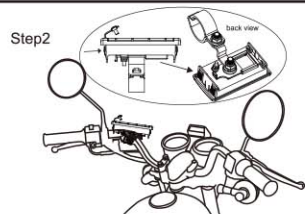


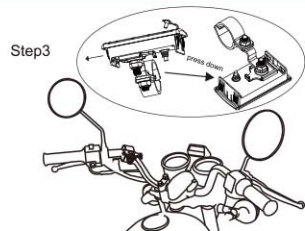
## INSTALLATION (MODE 1"Handlebar Mount")



1. Install "P" shaped clamp or "Z" shaped bracket threaded (item #5) on to the Bluetooth controller hook. (packed with Bluetooth controller). Use the provided bolt to fix on the handlebar. The provided foam rubber pad can be used to accomplish tight and secure mounting.

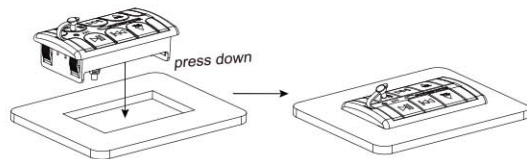


2. Slide the Bluetooth controller into the hook



3. Press down the Bluetooth controller hook and then slide out the Bluetooth controller box at the same time to remove the Bluetooth controller

## INSTALLATION (MODE 2"Push-Fixed in Mount")



//Features and specifications subject to change and or improvement without notice.  
Though we tried our ensure that this manual is free and clear of errors please don't hold  
us responsible for printing errors.//

Copyright by Cadence Acoustics LTD.  
[www.cadencesound.com](http://www.cadencesound.com)

CADENCE



# Bluetooth ADAPTER BTM-1



## OWNER'S MANUAL

## BTM-1

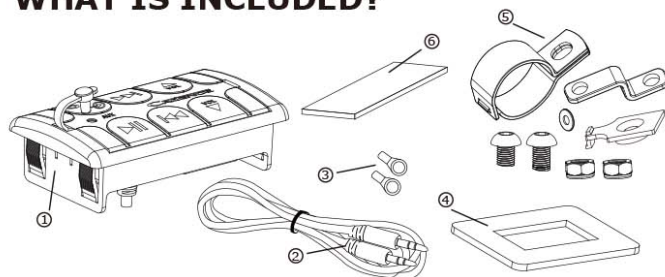
Thank you for purchasing this Cadence Bluetooth Adapter.

The Cadence Bluetooth Adapter pairs with any Bluetooth enabled device and allows it to serve as the source unit in a mobile system

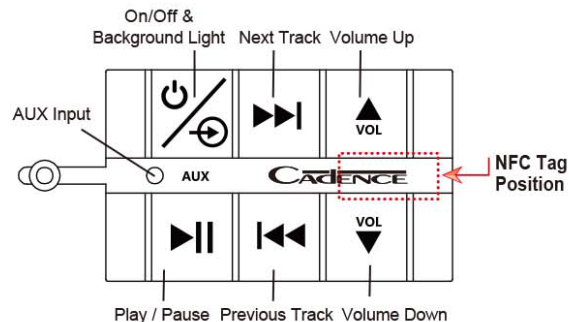
### FEATURES

- Connects to all amplifiers with RCA inputs this eliminates the need for a pricy head unit
- 3.5mm Auxiliary input jack for use with non-Bluetooth devices
- Auxiliary RCA inputs
- Simple to use NFC Bluetooth configuration
- Sealed for outdoor applications such as ATVs/Motorcycles /Marine and Watercraft /Golf carts and many more
- Easily Mounts on to handlebars, in dash or consoles.
- Easy router template guide for flush to surface mounting
- Raised backlit buttons for low light conditions
- Size :3.82"(l)x2.13"(w)x1.14"(d)

### WHAT IS INCLUDED?



1. BTM-1
2. 3.5mm Auxiliary input cable
3. Ring terminals
4. Easy router template
5. Mounting hardware
6. Industrial foam rubber pad



### Bluetooth Pairing and Connection:

1. Connect Bluetooth controller box to your device
2. Press and Hold for three seconds until power indicator lights (red)
3. The system will automatically go into pairing mode. The power indicator will turn red for about 4-6 seconds and then alternating red and blue (Bluetooth blue Power red). Please be sure that Bluetooth is turned on your device and Select CADENCE BTM-1 on your device to connect Bluetooth controller (if the Bluetooth controller is connected, the light will turn blue and not flash)
4. Bluetooth password "2277"
5. When the device is out of Bluetooth range, Bluetooth will be disconnected automatically and automatically reconnect when detected in range again. (If not please just repeat steps 1 and 2)
6. When Bluetooth is disconnected or the 3.5mm AUX Input is plugged in, the power indicator will glow red.

### NFC Pairing and Connection:

1. Have your device touch the NFC tag on the controller and then you will receive the notification to require password
2. Enter the password "2277" to turn on the Bluetooth. (This is only for the first time connection, no need to enter password when connect NFC again)
3. After turn on the Bluetooth function by NFC, the operation procedure is same as the above "Bluetooth Pairing and Connection"
4. Touch the NFC tag again to turn off the Bluetooth function.

### Playing Music:

1. Press and hold for three seconds to turn On/Off
2. Press shortly for control the red background light
3. Press to start or pause the music
4. Press shortly for next track
5. Press shortly for Previous track
6. Press shortly for volume up
7. Press shortly for volume down

### Wiring Diagram

